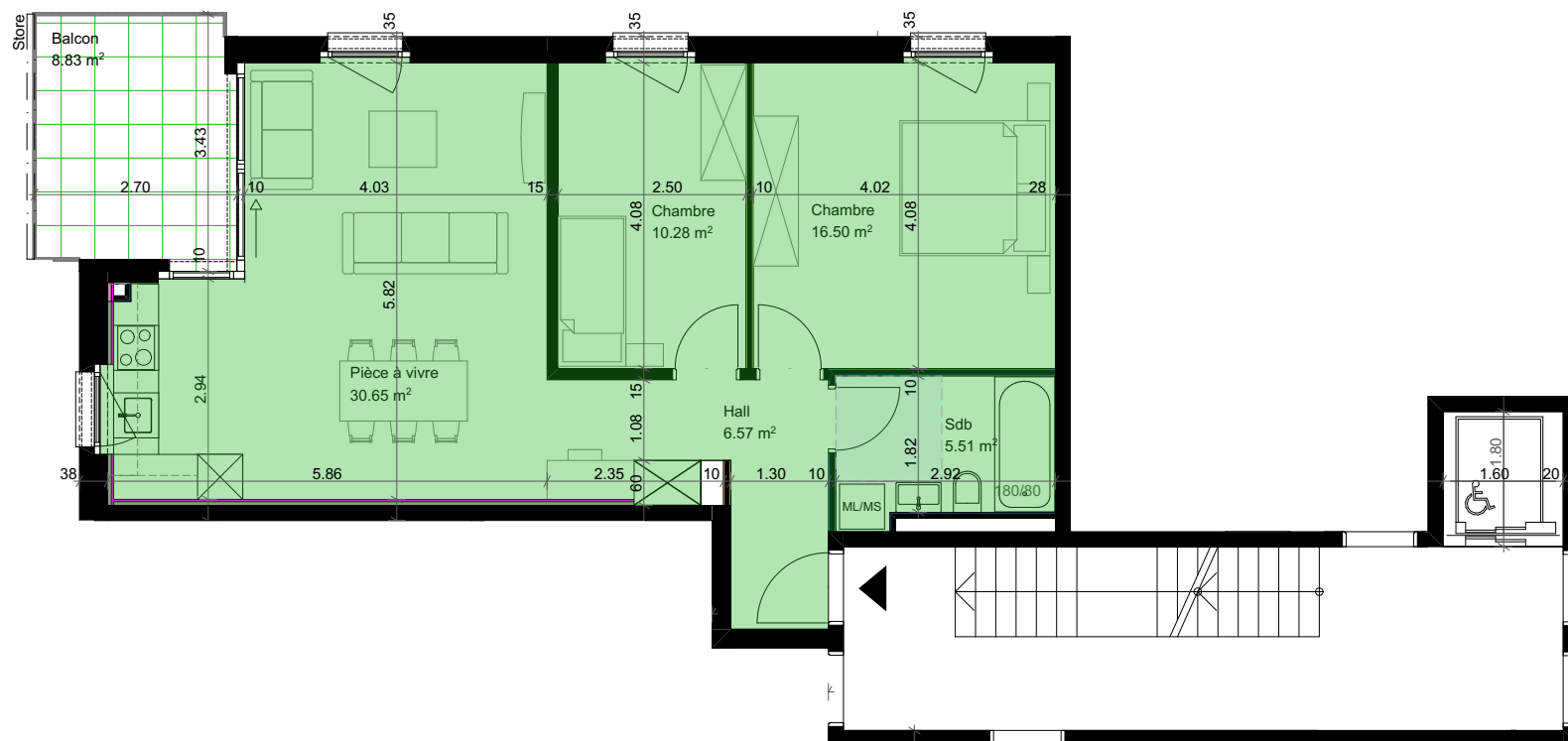
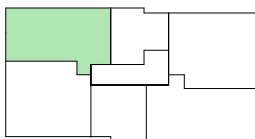
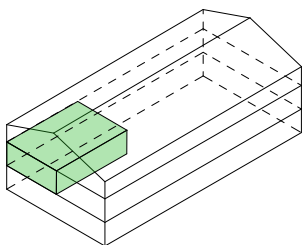


Appartement A-15



Pièces	3.5
Situation	étage 1
Surface PPE *	74.53 m ²
Surface balayable	69.51 m ²
Balcon	8.83 m ² , 1 x ouest
Orientation	nord - ouest
Sous-sol	6.06 m ² , 1 cave
Intérieur	1 place de parc

* 50% Balcon + 10% Cave + Appartement