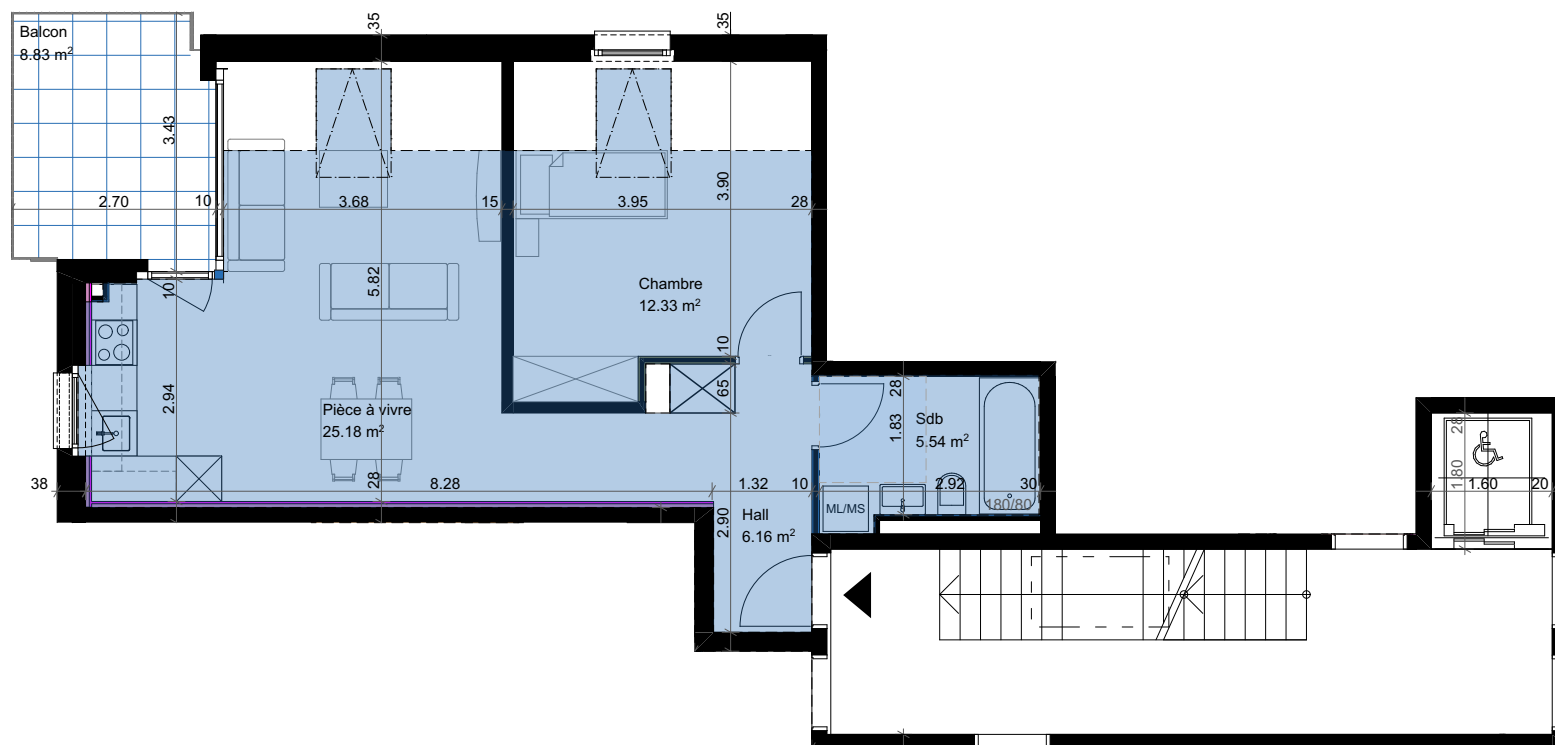
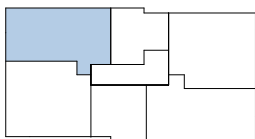
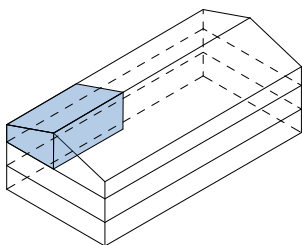


Appartement A-25



Pièces	2.5
Situation	combles
Surface PPE *	54.23 m²
Surface balayable	49.21 m²
Balcon	8.83 m², 1 x ouest
Orientation	nord - ouest
Sous-sol	6.06 m², 1 cave
Intérieur	1 place de parc

* 50% Balcon + 10% Cave + Appartement