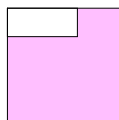
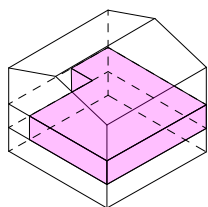
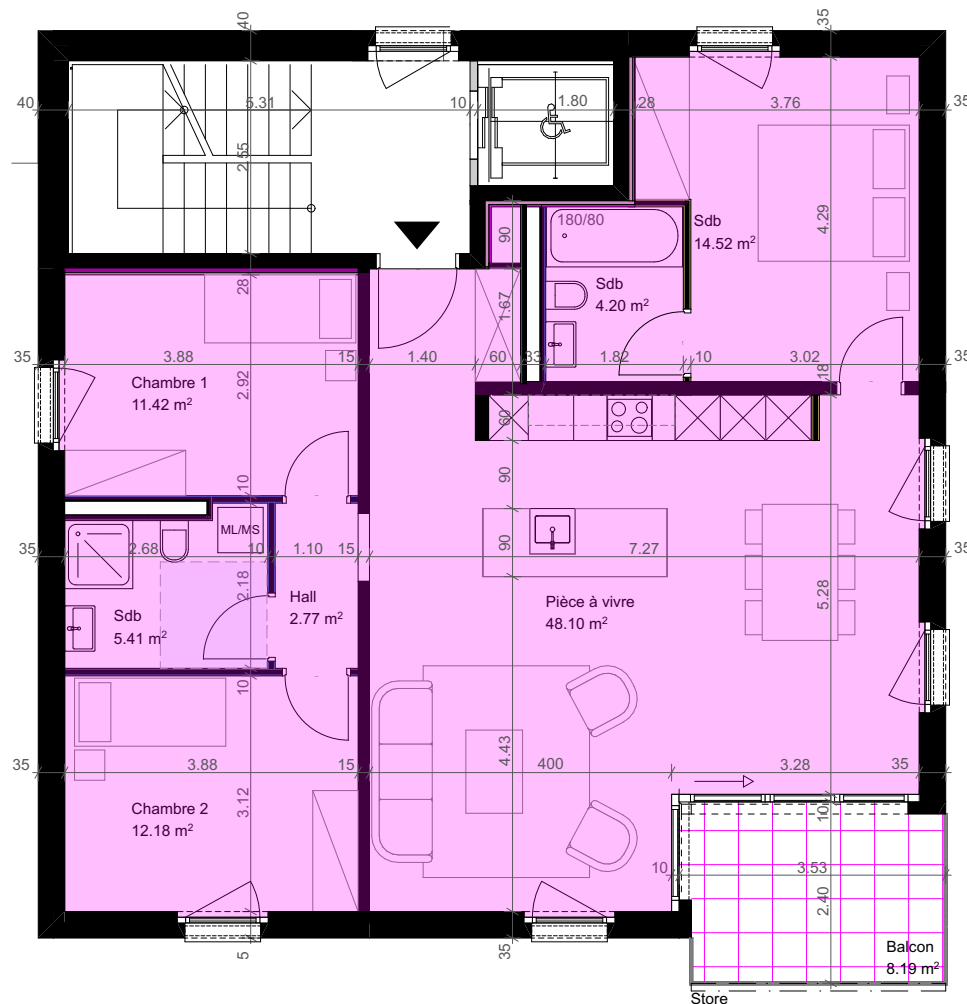


Appartement B-11



Pièces	4.5
Situation	étage 1
Surface PPE *	104.23 m ²
Surface balayable	98.60 m ²
Balcon	8.19 m ² , 1 x sud - est
Orientation	sud - ouest
Sous-sol	15.35 m ² , 1 cave
Intérieur	1 place de parc



* 50% Balcon + 10% Cave + Appartement